

Customer :

customer

Customer part :

customer part

Comment :

Comment

S1=2.53

S2=3.4

Tmax=460

Tp S2=499.0

PI=0.43

HI=125

Sample =1669.60

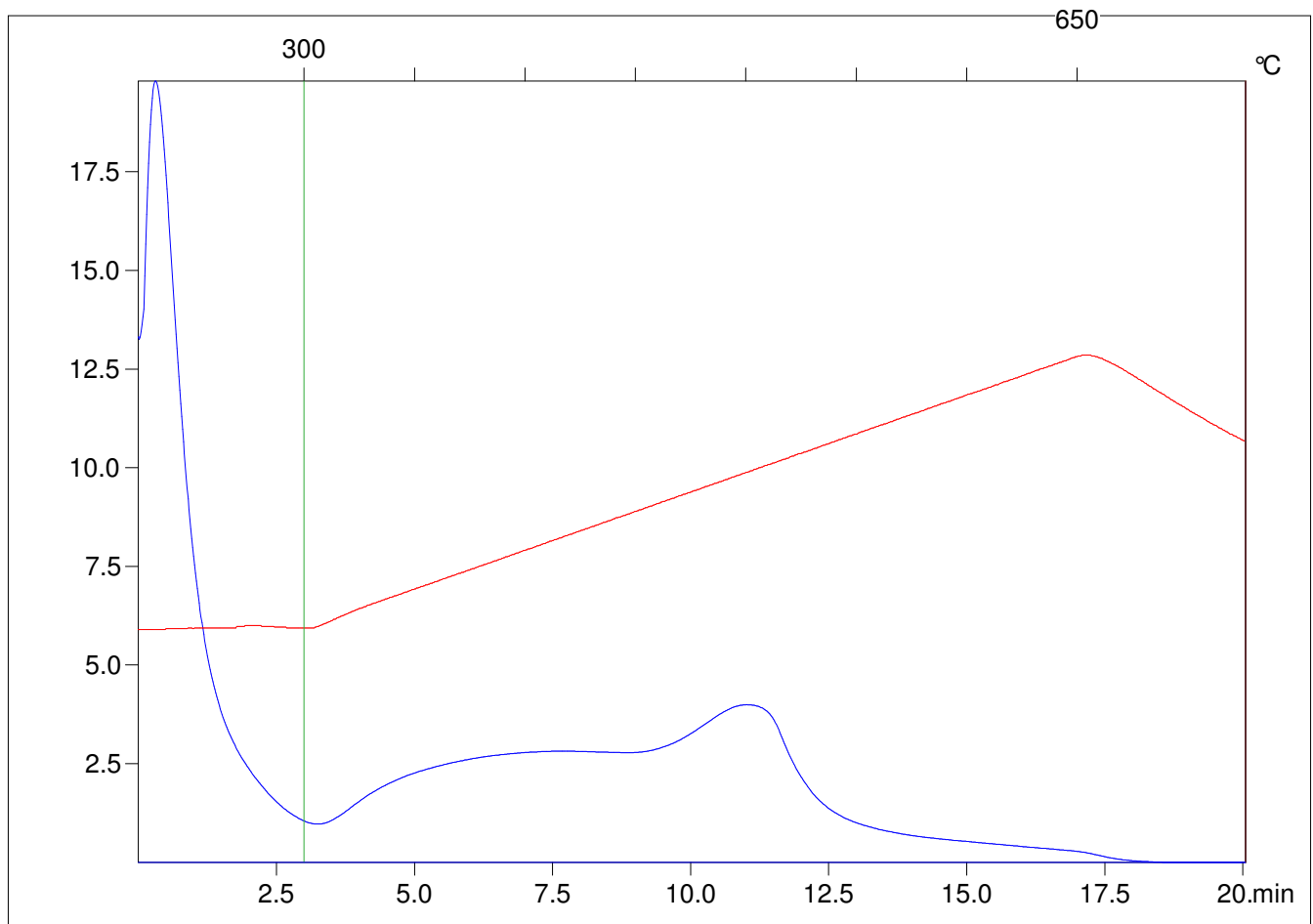
Method =Bulk Rock

Cycle=Basic

KFID(10*9)=1444

Qty =70.5

TOC=2.73



C:\VINC\PK1_1792\PK011.R00 : FID pyrolysis graphic

State

Pyro Status

Oxi Status